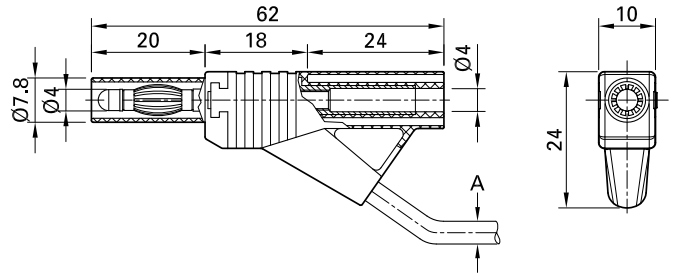
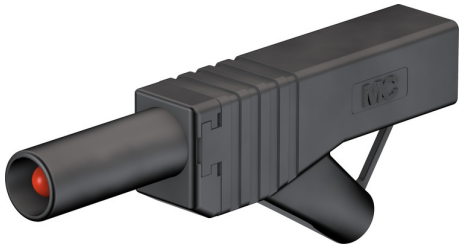


## XL-459/30



Item number 66.9649-\*

Stackable, Ø 4 mm, with spring-loaded MULTILAM, for self-assembly of test leads. With rigid insulating sleeve. With 30° cable outlet. Screw connection.

Technical data	
Diameter of plug system	4 mm
Rated Values	1000 V, CAT II, 32 A
Colours *	21 22 23 24 25 26 27
Outer diameter	3.9
Test accessory acc. to	IEC EN 61010-031
Component parts	ESZ-WZ