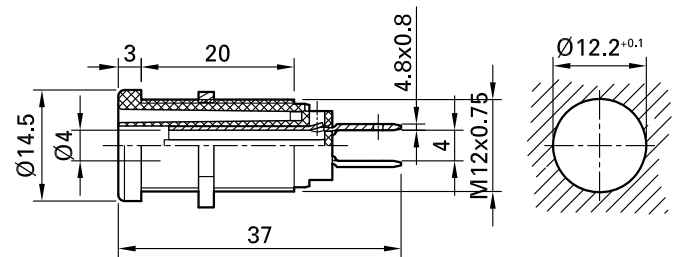


## XEB-1R



Item number 66.9131-\*

Insulated, rigid,  $\varnothing$  4 mm, accepting spring-loaded  $\varnothing$  4 mm plugs with rigid insulating sleeve. Brass sheet. The socket consists of two insulated, semi-circular contacts, which are connected to each other when a plug is inserted (switch function). The socket is screwed into pre-drilled panels of plastic, metal, etc.

Connection: 2x Flat connecting tab 4.8 mm x 0.8 mm.

Technical data	
Diameter of plug system	4 mm
Rated Values	1000 V, CAT IV, 20 A
Surface treatment electrical contact	Ni
Base material electrical contact	CuZn
Colours *	<span style="background-color: yellow;">20</span> <span style="background-color: black;">21</span> <span style="background-color: red;">22</span> <span style="background-color: blue;">23</span> <span style="background-color: yellow;">24</span> <span style="background-color: green;">25</span> <span style="background-color: purple;">26</span>
Thread	GEW.12-MUTTER
Test accessory acc. to	IEC EN 61010-2-030
Supplied assembly material	GEW.12-MUTTER
Approvals	UR
Remarks	Accessories: Flat connecting receptacle FSH4,8x0,8; Tube spanner SS2; Tube spanner SS425