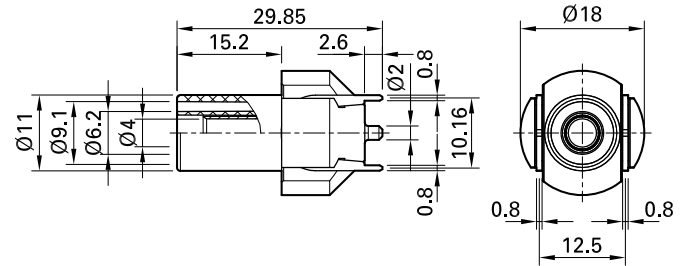
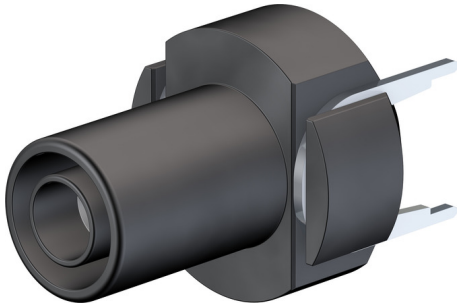


## XELA-4



Item number 66.9032-\*

For mounting on vertical printed circuit boards, touch-protected and insulated according to IEC/EN 61010-1. The socket is directly soldered onto printed circuit boards. Fixed Ø 4 mm socket, to fit spring-loaded Ø 4 mm plugs with rigid insulating sleeve. Machined brass.

Connection: Ø 2 mm round pin and contacts for mounting on printed circuit boards.

Technical data	
Diameter of plug system	4 mm
Rated Values	1000 V, CAT III, 24 A
Surface treatment electrical contact	Au
Base material electrical contact	CuZn
Colours *	<span style="background-color: black; color: white; padding: 2px;">21</span> <span style="background-color: red; color: white; padding: 2px;">22</span>
Test accessory acc. to	IEC EN 61010-2-030