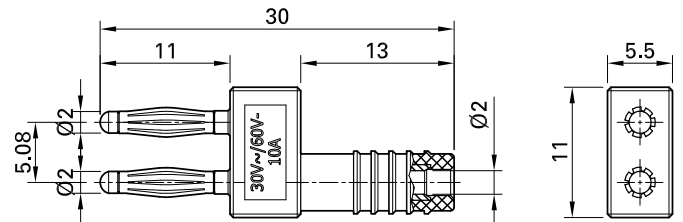
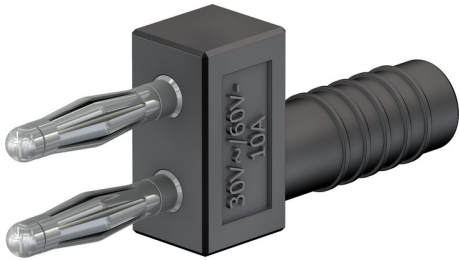


KS2-5,08L/1A/N



Item number 63.9844-*

Insulated, Ø 2 mm, made of brass. Equipped with spring-loaded MULTILAM to ensure vibration-proof contacts – ideal use is in the automotive field for test drives and servicing. Ø 2 mm rigid socket in insulator accepting spring-loaded Ø 2 mm plugs with rigid insulating sleeve.

Technical data

Diameter of plug system	2 mm
Rated Values	30 VAC, 10 A / 60 VDC, 10 A
Surface treatment electrical contact	Ni
Base material electrical contact	CuZn
Colours *	21
Plug spacing	5,08 mm
Test accessory acc. to	IEC EN 61010-031