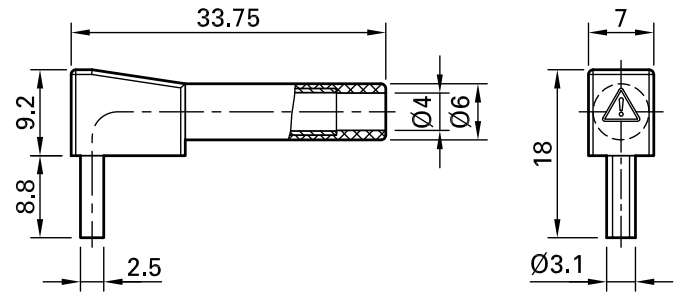
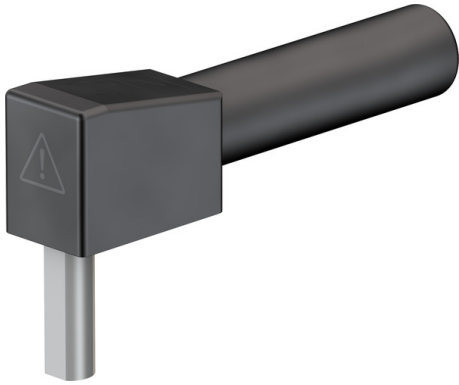


SLB4-I/90-S



Item number 49.7093-*

Rigid, right-angled to screw on to relay housings, distributor boxes etc. Conforms to protection class IP2X when installed. Ø 4 mm rigid socket in insulator, accepting spring-loaded Ø 4 mm plugs with rigid insulating sleeve. Connecting pin: Ø 3.1 mm x 2.5 mm.

Technical data	
Diameter of plug system	4 mm
Rated Values	1000 V, CAT II, 32 A
Surface treatment electrical contact	Ni
Base material electrical contact	CuZn
Colours *	21 22 23
Test accessory acc. to	IEC EN 61010-2-030
Pin D / L	Ø 3,1 mm x 2,5 mm
Material insulating part	PA