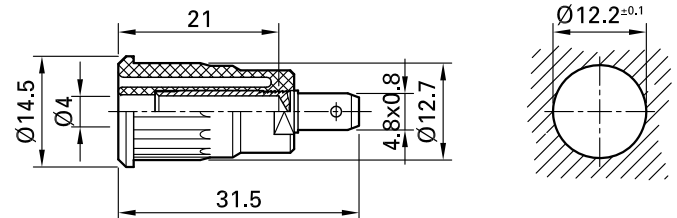


SEB4-F/N



Item number 49.7079-*

Insulated, rigid, Ø 4 mm, accepting spring-loaded Ø 4 mm plugs with rigid insulating sleeve. Machined brass. The socket is pressed into pre-drilled panels of plastic, metal, etc. Connection: Flat connecting tab 4,8 mm x 0,8 mm.

Technical data	
Diameter of plug system	4 mm
Rated Values	1000 V, CAT III, 24 A
Surface treatment electrical contact	Ni
Base material electrical contact	CuZn
Colours *	20 21 22 23 24 25 27 28
Test accessory acc. to	IEC EN 61010-2-030
Material insulating part	PA
Approvals	UR
Remarks	Accessories: Flat connecting receptacles FSH4,8x0,8; Press-in tool MB4-S