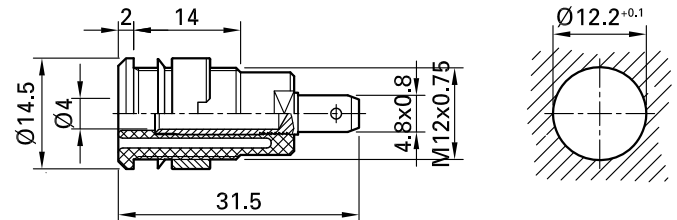


## SLB4-F/N-X



Item number 49.7044-\*

Insulated, rigid, Ø 4 mm, accepting spring-loaded Ø 4 mm plugs with rigid insulating sleeve. Machined brass. The socket is screwed into pre-drilled panels of plastic, metal, etc. Connection: Flat connecting tab 4,8 mm x 0,8 mm.

Technical data	
Diameter of plug system	4 mm
Rated Values	1000 V, CAT III, 24 A
Surface treatment electrical contact	Ni
Base material electrical contact	CuZn
Colours *	20 21 22 23 24 25 26 27 28 29
Test accessory acc. to	IEC EN 61010-2-030
Supplied assembly material	MUR/M12x0,75
Material insulating part	PA
Approvals	UR
Remarks	Accessories: Flat connecting receptacle FSH4,8x0,8; Tube spanner SS2; Tube spanner SS425