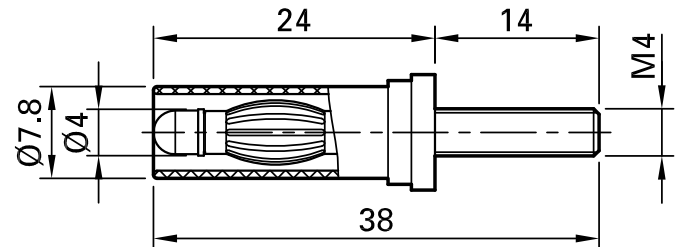
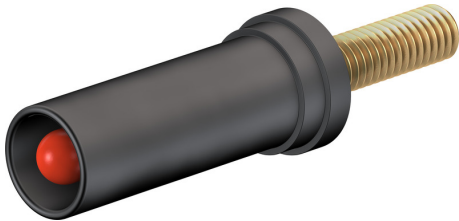


## SA400-VI



Item number 24.0117-\*

Insulated, with M4 threaded bolt for screw connection to threaded holes. Machined brass. Ø 4 mm MULTILAM plug with rigid insulating sleeve. The adapter is supplied without fastening material.

Technical data	
Diameter of plug system	4 mm
Rated Values	600 V, CAT II, 32 A
Surface treatment electrical contact	Au
Base material electrical contact	CuZn
Colours *	21 22 23 24 25 26 27 28 29
Thread	M4
Test accessory acc. to	IEC EN 61010-031
Material insulating part	PA