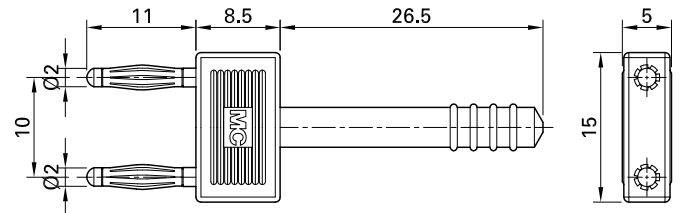
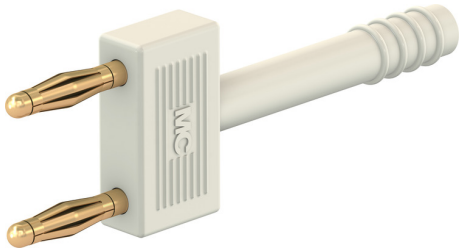


KS2-10L



Item number 24.0042-*

Insulated, Ø 2 mm, made of brass, one piece and with springloaded MULTILAM. With insulating grip.

Technical data

Diameter of plug system	2 mm
Rated Values	30 VAC, 10 A / 60 VDC, 10 A
Surface treatment electrical contact	Au
Base material electrical contact	CuZn
Colours *	29
Plug spacing	10 mm
Test accessory acc. to	IEC EN 61010-031