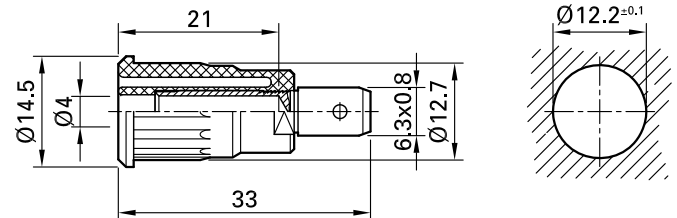


SEB4-F/6,3



Item number 23.3150-*

Insulated, rigid, \varnothing 4 mm, accepting spring-loaded \varnothing 4 mm plugs with rigid insulating sleeve. Machined brass. The socket is pressed into pre-drilled panels of plastic, metal, etc. Connection: Flat connecting tab 6,3 mm x 0,8 mm.

Technical data	
Diameter of plug system	4 mm
Rated Values	1000 V, CAT III, 32 A
Surface treatment electrical contact	Au
Base material electrical contact	CuZn
Colours *	20 21 22 23 24 25 27 28
Test accessory acc. to	IEC EN 61010-2-030
Approvals	UR
Remarks	Accessories: Flat connecting receptacles FSH6,3x0,8; Press-in tool MB4-S