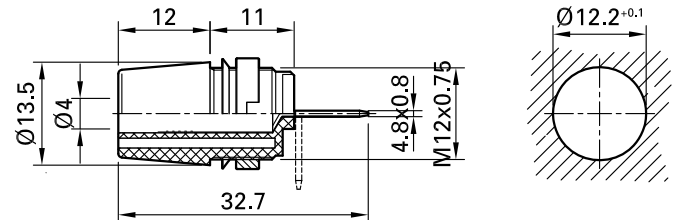
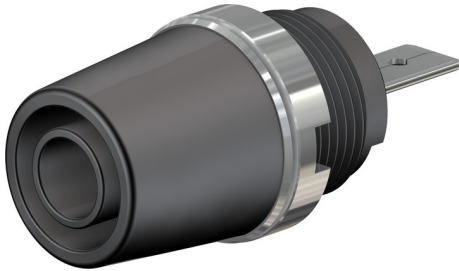


SAB4-F/A



Item number 23.3110-*

Insulated, rigid, \varnothing 4 mm, accepting spring-loaded \varnothing 4 mm plugs with rigid insulating sleeve. Brass sheet. The socket is surface-mounted in pre-drilled panels of plastic, metal, etc. Flat connecting tab 4.8 mm x 0.8 mm, can be bent to 90°, once only.

Technical data	
Diameter of plug system	4 mm
Rated Values	1000 V, CAT II, 20 A
Surface treatment electrical contact	Ni
Base material electrical contact	CuZn
Colours *	20 21 22 23 24 25
Test accessory acc. to	IEC EN 61010-2-030
Supplied assembly material	MUR-S/M12x0,75; SSP4
Material insulating part	PA
Approvals	UR
Remarks	Accessories: Flat connecting receptacle FSH4,8x0,8; Tube spanner SS2; Tube spanner SS425