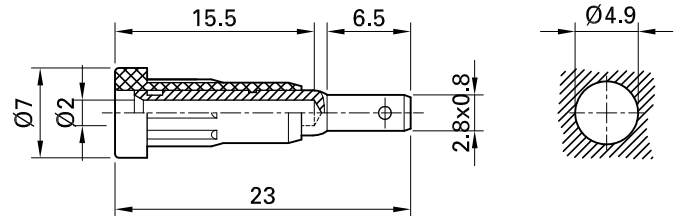


EB2



Item number 23.1011-*

Insulated Ø 2 mm rigid made of machined brass. The socket is pressed into predrilled panels of plastic, metal etc. Connection: Flat connecting tab 2.8 mm x 0.8 mm.

Technical data	
Diameter of plug system	2 mm
Rated Values	30 VAC, 10 A / 60 VDC, 10 A
Surface treatment electrical contact	Au
Base material electrical contact	CuZn
Colours *	20 21 22 23 24 25 26 27 28 29
Test accessory acc. to	IEC EN 61010-2-030
Component parts	I-EB2; B-EB2
Remarks	Accessories: Press-in tool MB2; Flat connecting receptacle FSH2,8x0,8