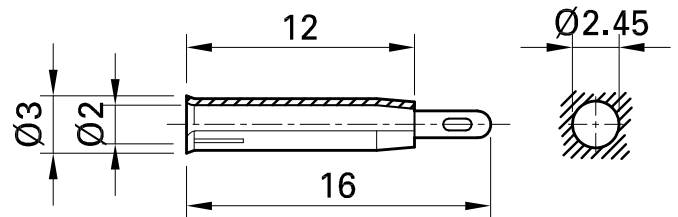
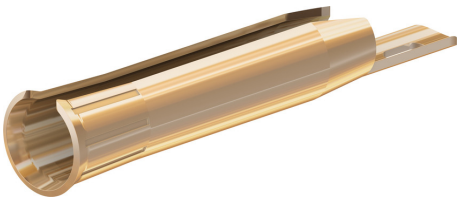


## LABORATORY SOCKET

## LB2



Item number 23.1001

Uninsulated Ø 2 mm rigid, made of rolled brass sheet. Mounting by pressing or soldering into holes drilled in printed circuit boards or housings. Solder connection.

Technical data	
Diameter of plug system	2 mm
Rated Values	30 VAC, 10 A / 60 VDC, 10 A
Surface treatment electrical contact	Au
Base material electrical contact	CuZn
Test accessory acc. to	IEC EN 61010-031
Remarks	Accessories: Press-in tool MB2