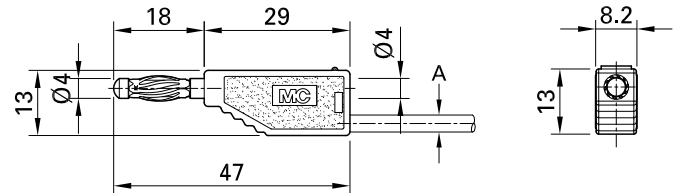
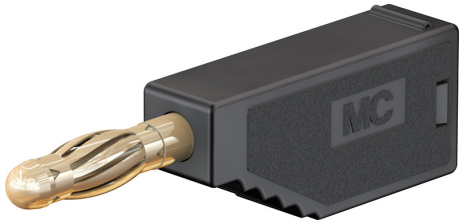


## SLS425-AM



Item number 22.2633-\*

Stackable,  $\varnothing$  4 mm, with spring-loaded MULTILAM for self-assembly of test leads. Screw connection.

Technical data	
Diameter of plug system	4 mm
Surface treatment electrical contact	Au
Colours *	20 21 22 23 24 25 26 27 28 29
Outer diameter	4.0
Test accessory acc. to	IEC EN 61010-031
Component parts	KT425-A; LS425-AM
Material insulating part	PA