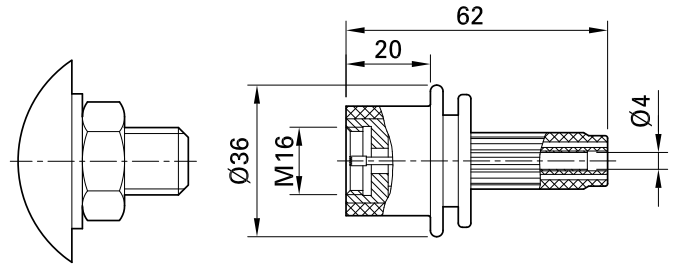
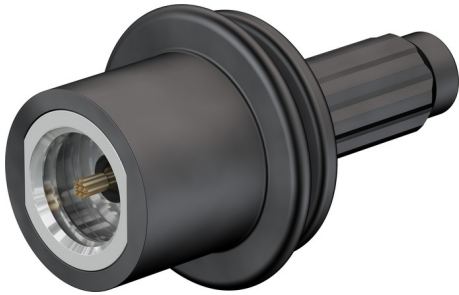


GBSA/M16/SHZ-CATIV



Item number 20.2010-*

Insulated, with internal thread for rapid and safe contact to threaded bolts. Contact is made by a spring-loaded tip. Ø 4 mm rigid socket in insulator accepting spring-loaded Ø 4 mm plugs with rigid insulating sleeve.

Machined brass. Body nickel-plated, connecting socket and contact tip gold-plated.

Technical data	
Diameter of plug system	4 mm
Rated Values	1000 V, CAT IV, 1 A
Surface treatment electrical contact	Au; Ni
Base material electrical contact	CuZn
Colours *	20 21 22 23 24 25 26 27 28 29
Thread	M16
Test accessory acc. to	IEC EN 61010-031
Approvals	CE